

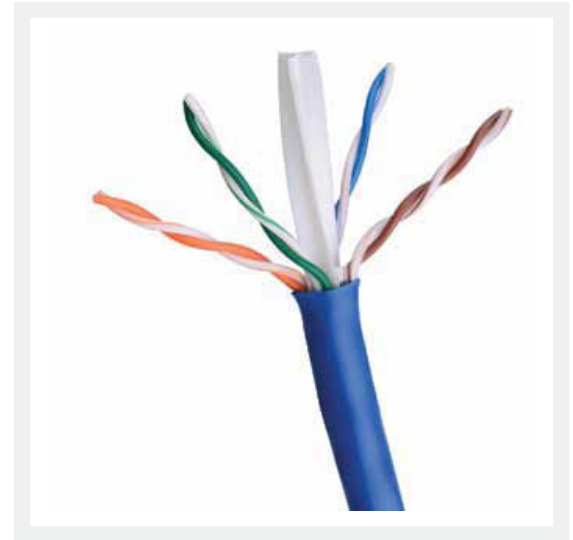
## Category 6 S/FTP 4 Pair 24AWG Elevator Cable

### OPTIPLUS Category 6 S/FTP (Foil Twisted Pair-Shielded) 4

**Pair 24AWG Elevator Cable** is an advanced solution for very risky environment where cabling systems requires flexibility in physical installation. It is capable of carrying high bit-rate signaling for extended distances in horizontal applications

### Standards

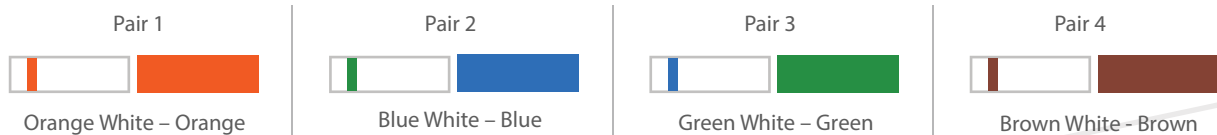
- ANSI/TIA-568-C.2
- TIA/EIA 568-B.2-1
- ISO/IEC 11801
- ISO/IEC 611156-5
- EN 50288-1
- IEEE /802.af, IEEE 802.3at for PoE applications



### Key Features:

- Tested up to 100 MHz
- High ACR values- providing low BER (Bit Error-Rate)
- Exceeds Cat 6 Performance
- Extremely high pair-balance-providing excellent EMC (Electromagnetic compatibility)
- Maximum noise immunity and Minimum radiations
- UL94V-0 rated plastic
- Standard packing will be 500 meter Roll

### Colour Code:



### Cable Construction:

|                                 |                            |
|---------------------------------|----------------------------|
| Conductor Material              | 24AWG Bare Stranded Copper |
| Conductor Construction          | Solid                      |
| Conductor Diameter              | 0.47mm                     |
| Insulation Material             | Polyethylene               |
| Insulation Diameter (approx.mm) | 1.93 ± 0.05mm              |
| Pairs Count                     | 4 nos                      |
| Jacket Thickness (mm)           | 0.20mm ± 0.05mm            |
| Jacket Colour                   | White, Gray, Blue & Orange |
| Measurement Marking             | Yes                        |

## Electrical and Mechanical Characteristics:

- Impedance - 100MHz-100 ± 5%
- Frequency - 1 MHz to 100 MHz
- DC Resistance - 130 /100m
- Capacitance - 50 pF/m
- Propagation Delay Skew - 490ns/100m
- Skew - 100MHz -15ns/100m
- Bend Radius - 58.2mm (min)
- Insulation Resistance - 5 G.km
- Operating Temperature - -20°C to 85°C
- Storage Temperature - 0°C to 80°C

## Ordering Information:

| PART NUMBER         | DESCRIPTION                                      | LENGTH (STANDARD) |
|---------------------|--|-------------------|
| OP-C6110424/EL-LSZH | Category6 S/FTP 4 Pair 24AWG Elevator Cable LSZH | 500 mtr           |

## Transmission Characteristics:

| Freq. (MHz) | Attenuation (dB) max. | NEXT (dB) min. | PS NEXT (dB) min. | ELFEXT (dB) min. | PSELFEXT (dB) min. | Return Loss (dB) min. |
|-------------|-----------------------|----------------|-------------------|------------------|--------------------|-----------------------|
| 1           | 2.0                   | 66.0           | 64.0              | 66.0             | 64.0               | 20.0                  |
| 4           | 3.8                   | 65.3           | 63.3              | 58.0             | 55.0               | 23.0                  |
| 10          | 6.0                   | 59.3           | 57.3              | 50.0             | 47.0               | 25.0                  |
| 20          | 8.5                   | 54.8           | 52.8              | 44.0             | 41.0               | 25.0                  |
| 31.25       | 10.7                  | 51.9           | 49.9              | 40.1             | 37.1               | 23.6                  |
| 100         | 19.8                  | 44.3           | 42.3              | 30.0             | 27.0               | 20.1                  |